



PASTEL SOCIETY OF AMERICA



Pastel Workshops

SEPTEMBER 2011 - NOVEMBER 2012

The Pastel Society of America
announces 21 new workshops
by acclaimed pastel artists.
All workshops take place in the historic
National Arts Club of New York.

▶ **Theories of Painting: Master concepts of Color & Design in Landscape with Doug Dawson, PSA**
September 26-28, 2011



Loaded with useful observations, principles and techniques, this workshop will feature demos, personal help about color and composition from PSA master pastelist and Hall of Fame recipient Doug Dawson. www.dougdawsonartist.com

▶ **Pastel Bodies — Pastel Heads with Robert Palevitz**
One day only! October 9, 2011



Learn to be free and loose in this workshop! The excitement and immediacy of soft pastel including form, movement and atmosphere should give students the opportunity to obtain a very alive human form with sensitivity and grace. Quick poses leading to a much longer sitting will give participants a chance to explore the wonder and beauty of the human body.

www.godwinlundquistfineart.com/pop/palevitz/bio.htm

▶ **Lively Landscape Paintings from Photographic Reference with Maggie Price, PSA**
October 21-23, 2011

Co-founder and former editor of *Pastel Journal*, Maggie Price has been exploring pastel landscape



painting for years. Students in this workshop will benefit from her expertise as they perfect painting landscapes from photographic reference. www.maggiepriceart.com

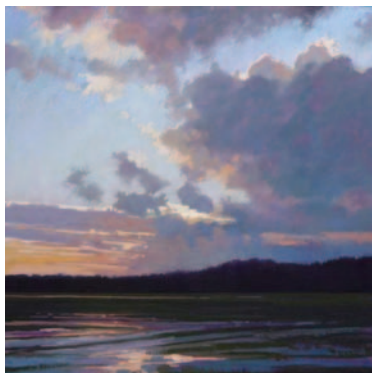
▶ **PanPastels and Everything but the Kitchen Sink with Mindy Lighthouse**
November 5-6, 2011

Students will discover the use of PanPastels in conjunction with silverpointe, watercolor, gouache,



colored pencils and more. A limited palette will be available for participants to use in the workshop. Students may work from photographs or objects supplied by the instructor. Material fee of \$35 covers PanPastels, appropriate papers, and silverpointe materials. www.mindyighthouse.com

Please contact the PSA office in advance of the workshop date for your supply list:

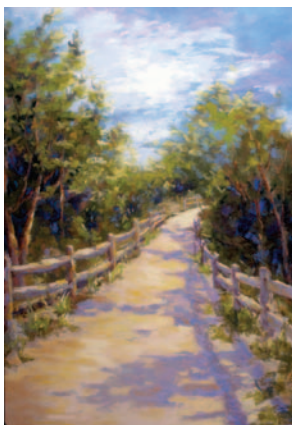


▶ **Looking Up:
Variations on the Landscape Sky
with Liz Haywood-Sullivan, PSA**
November 11-13, 2011

The sky is the most emotional element in a landscape painting, according to this award winning instructor, who will guide the student's investigation in how to create different lighting effects, moods and focus by concentrating on the expression of the sky and clouds above.

www.haywood-sullivan.com/pastel

▶ **Bring Life to Your Landscape
with Elissa Prystauk, PSA**
March 4, 2012



Painting from your own photos, explore techniques of creating light and dark with interesting angles, and a focal point to make your landscape painting come alive. The workshop will include a short demonstration, a discussion regarding papers and pastels, and one-on-one instruction. Prystauk is an award winning painter whose work has appeared

in three books and has been exhibited internationally. She is represented by several galleries.

www.elissaprystauk.com

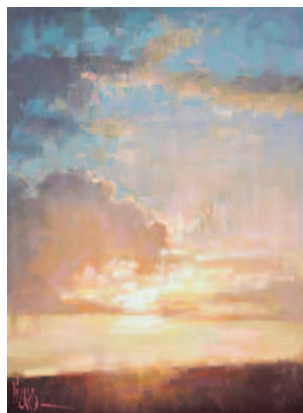
▶ **Studio Pastels with a Plein Air Mood
with Margaret Evans, PSA**
March 10-11, 2012



Using outdoor sketches and photographs, Evans will show how she encapsulates the complexities of outdoor painting to produce simple, but dramatic subjects for painting. Using wet and dry pastel techniques, using acrylics or gouache for underpainting, the development of the pastel painting can show as much depth and painterly qualities as oils, without losing its own characteristics.

www.shinafoot.co.uk/Home.html

▶ **The Painterly Pastel
with Alain Picard, PSA**
March 18, 2012



Picard will begin the workshop with a full-color pastel demonstration of a painterly approach to pastel by massing in shapes loosely at the start and

refining toward the finish. Students will then work from their own photographic references with individual instruction at their easels with discussions on the principles of shape, value, edge, color and design. All levels are welcome.
www.picardstudio.com

▶ **Paint the Landscape in Pastel with Maggie Price, PSA**
March 23-25, 2012



Explore the possibilities of pastel in this technique-intensive workshop. Learn more about underpaintings, layering, varieties of stroke and other techniques, as well as focusing on composition of your paintings, value structure, directing the viewer's eye through the painting, and much more. Daily demonstrations and lots of personal assistance. Class is suitable for all levels.
www.maggiepriceart.com

▶ **Awaken the Artist in You! with Christina DeBarry, PSA**
April 1, 2012



DeBarry will guide her students to capture the lus-

trousness and richness of both floral and still life paintings with a sensibility to color and its nuances. Emphasis will be on color harmony, value and temperature. Learn to see and create lost and found edges; explore the role of line and the interplay of light and shadow in creating depth of space.
www.debarrystudioarts.com

▶ **Landscape Interpretations with Eileen Serwer, PSA**
April 15, 2012

In her landscape paintings, Serwer conveys a mood, a feeling and an impression of places she has seen. She will explain the materials she uses,



demonstrate how she uses them, and help the student develop his own style. Students should bring several photos they would like to interpret, their pastels and paper. www.eileenserwer.com.

▶ **Luminous Sunsets and Sunrises in Pastel with Robert K. Carsten, PSA**
April 22, 2012

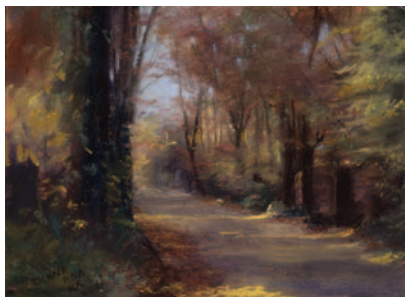


Explore the subtle, the exquisite, the poetic and other visual qualities achieved with dramatic skies. Using bold color combinations, subtle, nuanced color temperatures, and rich, deep darks, we can

Please contact the PSA office in advance of the workshop date for your supply list:

create luminous, uncommonly strong and stunning visual effects. Both Luminism and Tonalism will be discussed and demonstrated. Students will work from sketches and/or photos. Demonstration, critique, lots of painting time and fun!
www.robertcarsten.com

▶ **Landscape Painting in Pastel with Diana DeSantis, PSA**
April 29, 2012

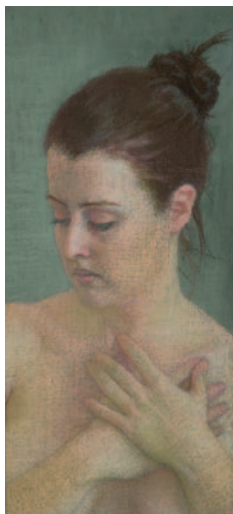


Create an exciting landscape pastel rich with color on the DeSantis board that is ideal, lightweight, rigid, fits into a rabbit frame without additional filling and accepts up to ten coats of pastel, giving the painting a wonderful luminosity with minimum dust. Jack Richeson manufactures DeSantis' board and will provide samples for students taking this workshop.

www.behr-thyssen.com/desantis.html

▶ **Portrait Painting with Ellen Eagle, PSA**
May 6, 2012

Students will observe the model's form, color and value relationships with a clear eye, and distill this complex information into a simply expressed, harmonious construction. Specificity and elegance are stressed as we engage in the intense color analysis intrinsic to creating a portrait in pastel. Digital images of the instructor's portraits will be



shown to demonstrate her evolving responses to her subjects.

www.elleneagleportraits.com

▶ **Painting with a Limited Palette with Sangita Phadke, PSA**
May 20, 2012



This workshop will provide strategies for creating a vibrant pastel painting while using a limited color palette. Award-winning Phadke will share her approach to color selection and demonstrate techniques for using a single pastel stick throughout a composition. Students will work from their own photographs and explore the benefits of choosing just a few pastels to complete a painting.

www.sangitaphadke.com/

▶ **Exploring Landscape Possibilities with Underpainting Techniques with Richard McKinley, PSA**
September 19-21, 2012

This three day workshop will cover the basics of landscape pastel with an emphasis placed on un-



derpainting techniques. Various underpainting methods utilizing both pastel and mixed media will be taught to those who are unfamiliar with the tech-

nique and help to hone the skills of those seasoned underpainting artists. Every day will consist of demonstrations and attention at individual student easels. www.mckinleystudio.com

► **Discovering Your Own Journey
with Frederick Somers, PSA**
October 6-7, 2012



This two day workshop will be a hands-on experience where artists can explore pastels using techniques Somers has learned through his career. "Dry washes," adding and removing color, using pastels as a wet medium and using color fields as part of composition are some of the things that will be covered. Demonstrations will focus on both his techniques and the thought process he follows as he develops his paintings. www.fredericksomers.com

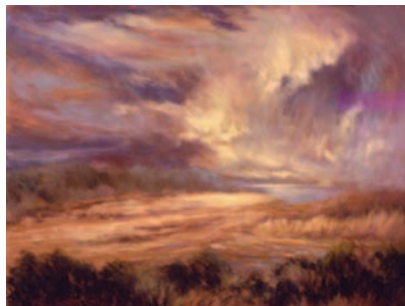
► **Pastel Alla Prima with Bill Creevy, PSA**
October 14, 2012



In this hands-on workshop, students will learn the fundamental skills, materials and techniques for completing a finished pastel in just one short sitting.

By employing demonstrations, easy to understand exercises and personal one-to-one instruction PSA Master Pastelist and Hall of Fame honoree Bill Creevy will teach the students how to paint strong, solid pastels that display fresh and exciting color. www.billcreevy.com

► **Before the Storm – Painting Atmosphere
with Rae Smith, PSA**
October 21, 2012



Spend a day painting atmosphere – all kinds of atmosphere! Whether it's a stormy day, a misty day or twilight, there are all sorts of techniques to consider. PSA president, Rae Smith will lead students on an exploration of the air around us. A one day workshop might not be enough, but it's a good beginning! www.raesmithart.com

► **Exploring Light on Black!
with Christine Ivers, PSA**
October 28, 2012



Paint stunning landscapes and experience the magic of painting on black textured Gator board.

continued on back page

Please contact the PSA office in advance of the workshop date for your supply list

Register Now!

FEES: One day workshops \$100; two day workshops \$250 and three day workshops \$450
Intimate classes with one-on-one instruction — 9:30 am – 4:30 pm

FALL 2011

- ▶ **Sept. 26-28 *Doug Dawson, PSA***
Theories of Painting: Master concepts of color & design in landscape
- ▶ **Oct. 9 *Robert Palevitz***
Pastel Bodies – Pastel Heads
- ▶ **Oct. 21-23 *Maggie Price, PSA***
Lively Landscape Paintings from Photographic Reference
- ▶ **Nov. 5-6 *Mindy Lighthipe***
PanPastels and Everything but the Kitchen Sink
- ▶ **Nov. 11-13 *Liz Haywood-Sullivan, PSA***
Looking Up: Variations on the Landscape Sky
- ▶ **Mar. 4 *Elissa Prystauk, PSA***
Bring Life to Your Landscape
- ▶ **Mar. 10-11 *Margaret Evans, PSA***
Studio Pastels with a Plein Air Mood
- ▶ **Mar. 18 *Alain Picard, PSA***
The Painterly Pastel
- ▶ **Mar. 23-25 *Maggie Price, PSA***
Paint the Landscape in Pastel
- ▶ **Apr. 1 *Christine Debarry, PSA***
Awaken the Artist in You!

SPRING 2012

- ▶ **Apr. 15 *Eileen Serwer, PSA***
Landscape Interpretations
- ▶ **Apr. 22 *Robert Carsten, PSA***
Luminous Sunsets & Sunrises
- ▶ **Apr. 29 *Diana DeSantis, PSA***
Landscape Painting in Pastel
- ▶ **May 6 *Ellen Eagle, PSA***
Portrait Painting
- ▶ **May 20 *Sangita Phadke, PSA***
Painting with a Limited Palette
- ▶ **Sept. 19-21 *Richard McKinley, PSA***
Exploring Landscape Possibilities with Underpainting Techniques
- ▶ **Oct. 6-7 *Frederick Somers, PSA***
Discovering Your Own Journey
- ▶ **Oct. 14 *Bill Creevy, PSA***
Pastel Alla Prima
- ▶ **Oct. 21 *Rae Smith, PSA***
Before the Storm –Painting Atmosphere
- ▶ **Oct. 28 *Christine Ivers, PSA***
Exploring Light on Black!
- ▶ **Nov. 4 *Janet A. Cook, PSA***
New York City Nocturnes

FALL 2012

PASTEL WORKSHOPS 2011-2012

Registration Form (*Please Print*)

Name _____

Address _____

City _____ State _____ Zip _____

Telephone
(Day) _____ (Eve) _____

e-mail: _____

Date of workshops you wish to attend: _____

Amount enclosed _____

Please make checks payable to: **PASTEL SOCIETY OF AMERICA**
15 Gramercy Park South, New York, NY 10003

PASTEL SOCIETY OF AMERICA, INC.
15 Gramercy Park South
New York, NY 10003

continued from previous page

Enjoy the immediacy of brilliant color when pure pigment is applied to the ultimate of dark values. Achieve impressive results while working on Ivers' handmade boards available for purchase for a nominal fee at the workshop. Bring your own photo or work from some that will be available. All levels welcome.

www.christineivers.com

► **New York City Nocturnes
with Janet A. Cook, PSA
November 4, 2012**

Capture the excitement of NYC at night in pastel and water media. Enhance reflections and attributes of light at night by using vivid underpainting with pastel overlay. Working from photographs, students



will learn how color, value and perspective are important in capturing the character of the city in vibrant pastel. An instructor at the PSA School for Pastels, Cook's pastels are in numerous collections. www.janetacook.com

***Please contact the PSA office in advance of
the workshop date for your supply list:
212-533-6931
email: psaoffice@pastelsocietyofamerica.org***