



Pastel Society of America

If you were unable to make it to New York to see our 39th *Annual Pastels Only* open juried exhibition at the National Arts Club, we have assemble a pictorial and editorial wrap up for you.

Receiving and Hanging is a busy day in the Grand Gallery at the NAC.

It's good to get back into the swing of things. People are glad to see one another after the long hot summer.



Despite hurricanes and tropical storms, the **Gallery Tour & Reception** conducted by Jimmy Wright, PSA, was well attended.



Many artists came to the **Materials Fair**; we believe the event will continue to grow. UArt introduced new product; Richeson had some attractive deals only available at the Fair; DaVinci had a panoply of products including the relatively new Pan Pastels, and Sennelier a wonderful assortment of favorites.





Materials Fair photo ID: (upper left) Michelle Montes from Savoir Faire write up a Sennelier order; (upper right) Tommy Esposito from UART discusses his product; (bottom left) Brenda Matson did a demonstration at the Richeson booth using Unison half sticks; (bottom right) KellyAnn Whyte from DaVinci helps a customer.

Awards Ceremony, Dinner & Raffle

Congratulations to the 48 artists who won awards this year. Five artists joined the ranks of Master Pastelist. To see all of the images of the award winners, please visit this link:

<http://www.pastelsocietyofamerica.org/2011PSAAwardWinners.pdf>



Jimmy Wright receives the PSA Founders Award given by The Flora B. Giffuni Foundation from JoAnn Giffuni Wellner.

←

Achieving the designation of Master Pastelist are (L-R): Charles Timken, Claudia Seymour, Sangita Phadke and Carol Kardon. President Rae Smith flanks the group on the right. Not pictured is Deborah Bays.

→





Popular instructor, author and painter Bill Creevy was inducted into the PSA Hall of Fame by President Rae Smith.



Jason Chang was named Friend of Pastel 2011 by President Rae Smith. →



Rae Smith presented departing Board of Governors member Claire Paisner a plaque citing her for Outstanding Service to PSA.



Raffle Drawing: upper left Richard Sutherland picks winner for Sam Goodsell painting; upper right Liz Haywood-Sullivan draws winner for her donated painting; lower left Doug Dawson picks winner for Richard McKinley's painting; lower right Rae Smith picks winner for portrait donated by Alain Picard.



Deborah Bays' still life was won by Jeff Fioravanti of Massachusetts; Sam Goodsell's city scape was won by Jill Atkin of Oregon; Liza Haywood-Sullivan's skyscape was won by Michael Bailey of New Jersey; Richard McKinley's landscape was won by Shirley Weissman of New York and Alain Picard's portrait was won by Gigi Liverant of Connecticut.

Demo by Bill Creevy, PSA

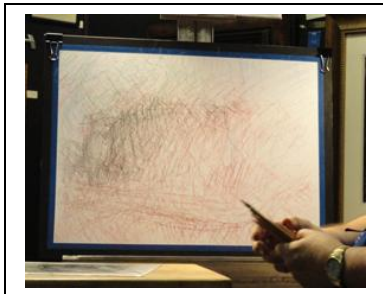
Text and photos from Maria Marino, PSA:

Typically Bill will use hot press watercolor paper and not sanded paper. Recently he has used Multimedia Artboard (<http://www.multimediaartboard.com/>) and likes the surface a lot. This product is only available in white and has a lightly sanded surface. The board does not wrinkle when it is wet yet has a tendency to snap if the end user bends the product.

Bill tends to work from drawings and prefers not to replicate photographs. He only uses photos as reference material. The board is taped with a ¼" blue tape to a substrate and favors defined edges to his painting. He begins the painting using various Cretacolor pastel pencils; he scumbles the image with light, loose strokes. He employs several warm colors throughout this process. This involves building layer upon layer of loosely placed strokes giving the painting a surreal look. He usually uses turpenoid to fuse several areas of color together; however, for the demo he used water with a fan brush. He next uses a hair dryer to dry the surface for further application. More scumbling of color is applied throughout – layer upon layer.

He begins to use Rembrandt pastels that dance along the surface – always employing a light touch. He then sprays Spectrafix fixative over the entire piece in horizontal strokes. Medium weight pastels and some soft pastel is reapplied to the surface. He prefers to work with pastels which are not buttery soft. He brings out the Cretacolor pencils at this stage since he desires a loose look to the subject. He highlights window frames with medium weight pastels of complementary color.

Bill spoke of the Hudson Valley Artists and has a fondness for Thomas Cole's work. He stated they were romantics, mystics and transcendentalists. He also likes Edwin Dickinson, George Inness and his incredible skies and Wayne Thiebaud's amazing landscapes.



We hope you enjoyed this photo review of the events surrounding our 39th annual open. Look for many exciting events in conjunction with our 40th next year!